

BERKELEY PARKLETS, BIKE CORRALS, AND ART LOTS

A "How-To" PRIMER FOR CREATING SUSTAINABLE TRANSPORTATION ALTERNATIVES

I, Arami Matevosyan, with the partnership of Youth Spirit Artworks (YSA), Lead Agency and a collaboration of seven local community based organizations, and the Berkeley Climate Action Coalition Transportation Working Group (BCAC TWG), seek a grant of \$16,000 in 2015/16 to support stipends for two UC Berkeley student interns to participate in planning and implementing sustainable transportation projects.

These projects include managing a CED studio course in developing designs for the parklet and facilitating a DeCal course in creating a "How-To" booklet for creating parklets and alternative micro-spaces in urban neighborhoods.

PROCESS & ITERATION

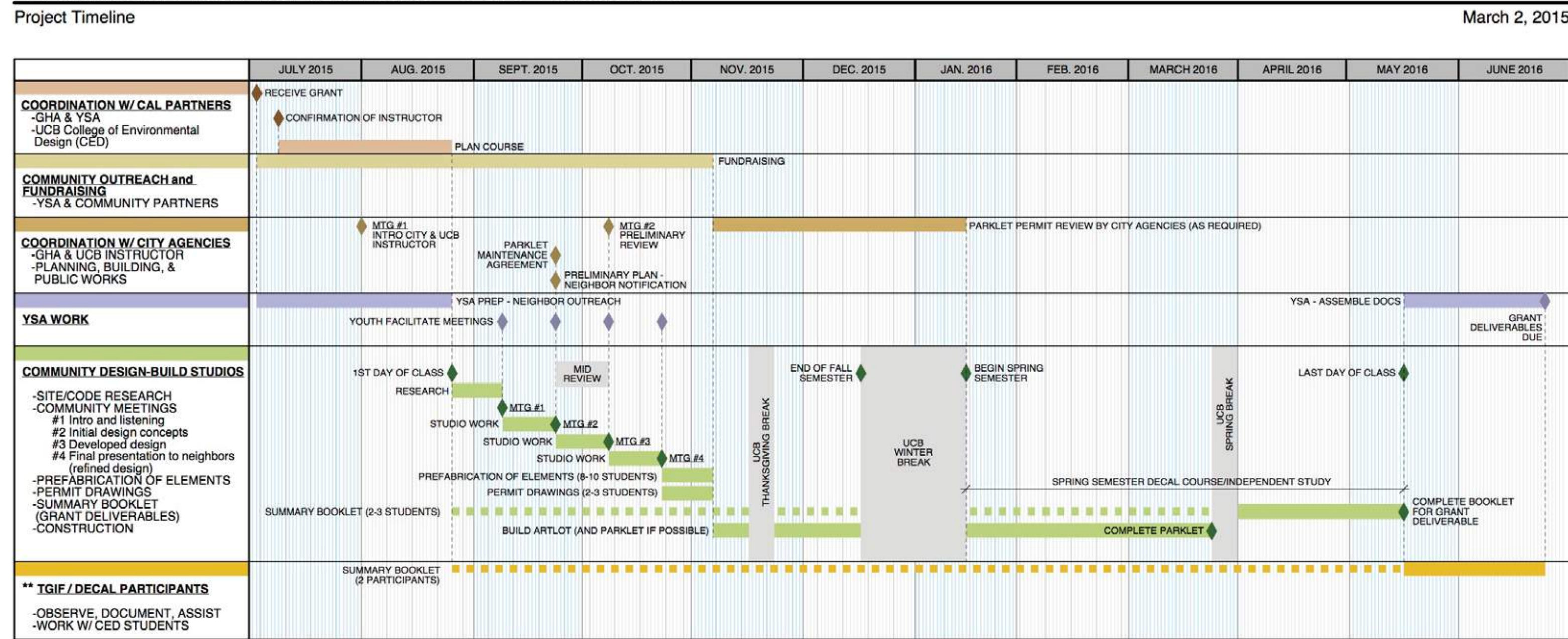


- | | | |
|---|---|--|
| <p>MEET & COLLABORATE</p> <ul style="list-style-type: none"> Engage with necessary stakeholders Discuss needs and priorities to implement parklets | <p>DEVELOP & REFINE</p> <ul style="list-style-type: none"> Conceptualize ideas and main points Format and organize information to include in application | <p>PRESENT & REPEAT</p> <ul style="list-style-type: none"> Review final product and submit Regroup and reflect upon changes needed to be made |
|---|---|--|

APPENDIX

Berkeley Parklets, Bike Corrals, and Art Lots:
A "How-To" Primer for Creating Sustainable Transportation Alternatives

A Parklet & Artlot for the Lorin - CCPF 2015/2016



** TGIF IS A PARALLEL GRANT FUNDING IN PROCESS FOR TWO PART-TIME CAL PARTICIPANTS: PAID INTERNSHIPS TO ASSIST DOCUMENT THE PROCESS AND PRODUCE A PARKLET "HOW-TO" MANUAL FOR THE CITY OF BERKELEY

Figure 1
IMPLEMENTATION STEPS & PROJECT TIMELINE

METRICS QUALITATIVE IMPACTS

Metric Category	Description	Impact	Status	Notes
Financial	UC Berkeley student interns (2 x \$12/hr x 50wks x 9hrs/wk)	\$10,800.00	Planning	
	Our goal is purchase "sustainable" materials.	Funds redirected toward sustainable suppliers/supplies/sources	Planning	
Transportation	Creating a parklet in front of Youth Spirit Artworks.	1 parking space transformation	Planning	
Use below for CalCAP calculations tool	Parklet will offer a space for social gathering.	Increase in foot traffic	Planning	
	Creating an art lot in the back parking lot of Youth Spirit Artworks.	6-10 parking spaces removed	Planning	
	Removing a 6-11 parking spaces	11,440 gallons of gas diverted from combustion	Planning	Assuming an average of 20 gallons per car per week for 52 weeks
Land/Biodiversity	Creating an art lot in the back parking lot of Youth Spirit Artworks	~2,430/sq. feet transformed into green space	Planning	
	Plants will be incorporated into the design of the art lot and parklet (species are yet unknown).	5-7 types of plants will be planted; 2-3 types of plants will be grown	Planning	Species and final number of plants will be decided in the final design of the spaces.
Materials & Waste	We will try to buy recycled material as much as possible.	1200 pounds of materials reused (describe/rename the materials)	Planning	Materials will be decided in the final design of the spaces.
Use below for CalCAP calculations tool	Our goal is purchase "sustainable" materials.	At least 75% of "sustainable" items purchased (eg. items with recycled content or certified materials)	Planning	Materials will be decided in the final design of the spaces.

Estimated Project Savings	Input (Enter estimated savings here in kWh, gallons, and/or pounds)	Calculated cost savings (\$)	Calculated GHG reductions (kg CO2e)
Estimated electricity savings (kWh)	0	\$0.00	0
Estimated water savings (gallons)	0	\$0.00	0
Estimated gasoline savings (gallons)	11,440	\$69.1	10041.2
Estimated waste reduction (pounds)	1,200	\$6.0	87.6

Emissions Factors and Costs	GHG emissions factor	Price
Electricity	0.307	\$0.11
Water	0.00000080	\$3.51
Gasoline	6.75	\$3.50
Waste	0.073	\$0.07

Emissions factors (prices) - 2011
*Please feel free to add any statistics that are relevant to your project, but please explain your calculations.
Source: Cal Climate Action Partnership greenhouse gas emissions inventory calculations, 2009.

METRICS QUANTITATIVE IMPACTS

Metric (Event, Campaign, Education, etc.)	Description	Impact	Status	Notes
CED design studio (fall)	Students produce designs for potential parklet and submit designs in deliverables for permitting process.	8-10 students, 1 faculty, CED	Planning (July 2015)	
CED build studio (spring)	Students work with community members and DeCal students to build parklet.	8-10 students, 1 faculty, CED	Planning	Some students may be the same students from the design studio.
DeCal course (fall)	Students aid in permitting process and constructing art lot.	20-30 students, 1 faculty, 2 facilitators, CED	Planning (July 2015)	
DeCal course (spring)	Students aid in constructing parklet as well as developing the "How To" Booklet.	20-30 students, 1 faculty, 2 facilitators, CED	Planning (November 2015)	Some students may be the same students from the fall DeCal course.
UC Berkeley student internship	Interns work as liaisons between all participants in project; facilitate DeCal course; report to weekly/monthly progress reports.	2 students	Planning	
Permitting	DeCal students work with CED studio design students to create necessary paperwork to submit permit request to allow the construction of the parklet and art lot.	30-42 students, YSA, GHA	Planning	
Building Art Lot	Construct art lot in the parking lot of Youth Spirit Artworks property.	1 business (Youth Spirit Artworks), 30-42 students	Planning	
Building Parklet	Construct parklet in front of Youth Spirit Artworks property.	30-42 students, YSA, GHA	Planning	
Developing "How-To" Booklet	Create a booklet that documents and streamlines the process to build parklets for businesses and entities interested in developing their own parklets.	City of Berkeley (businesses, etc.)	Planning	Hopefully the booklet spreads beyond Berkeley.

APPENDIX

Berkeley Parklets, Bike Corrals, and Art Lots:
A "How-To" Primer for Creating Sustainable Transportation Alternatives

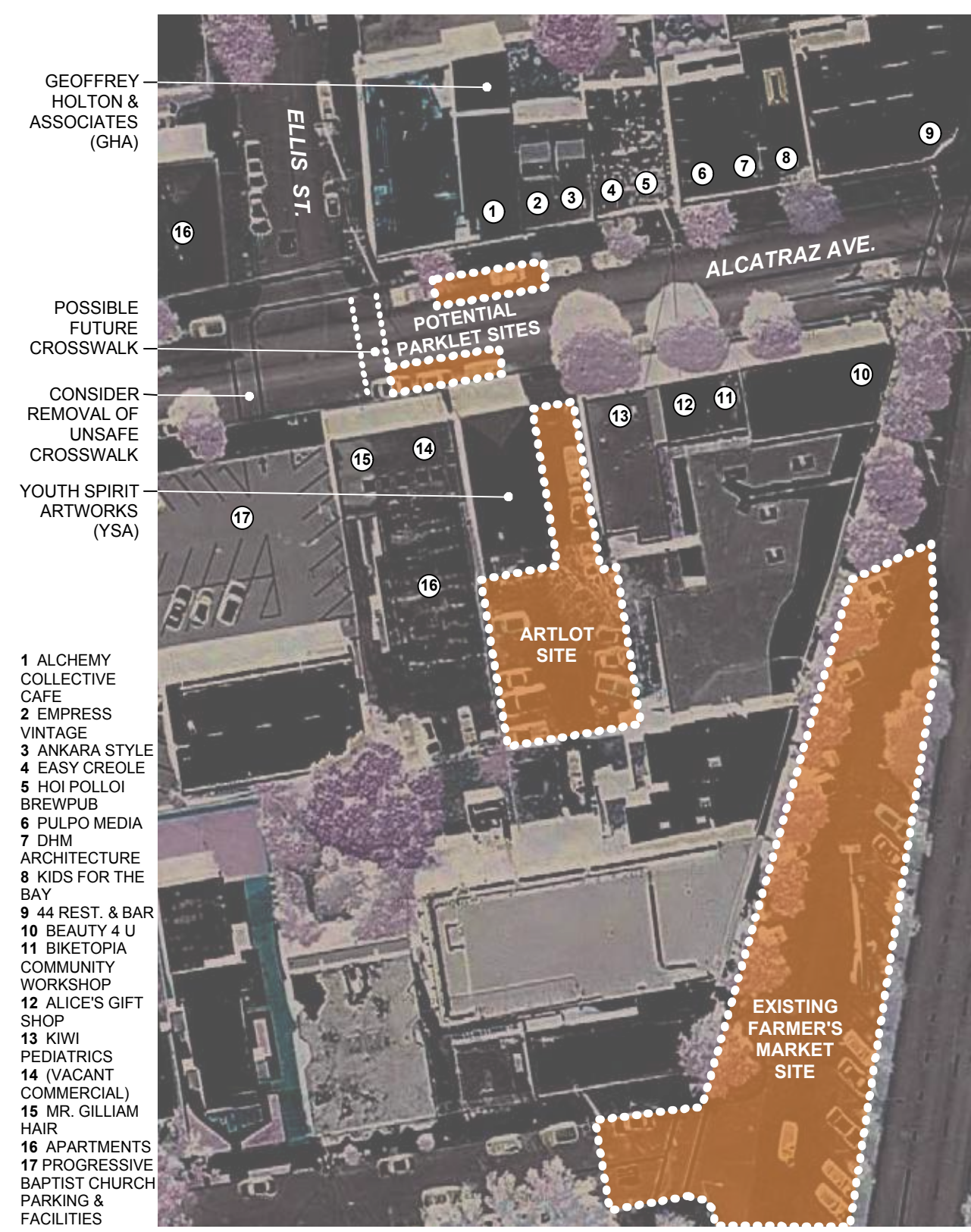
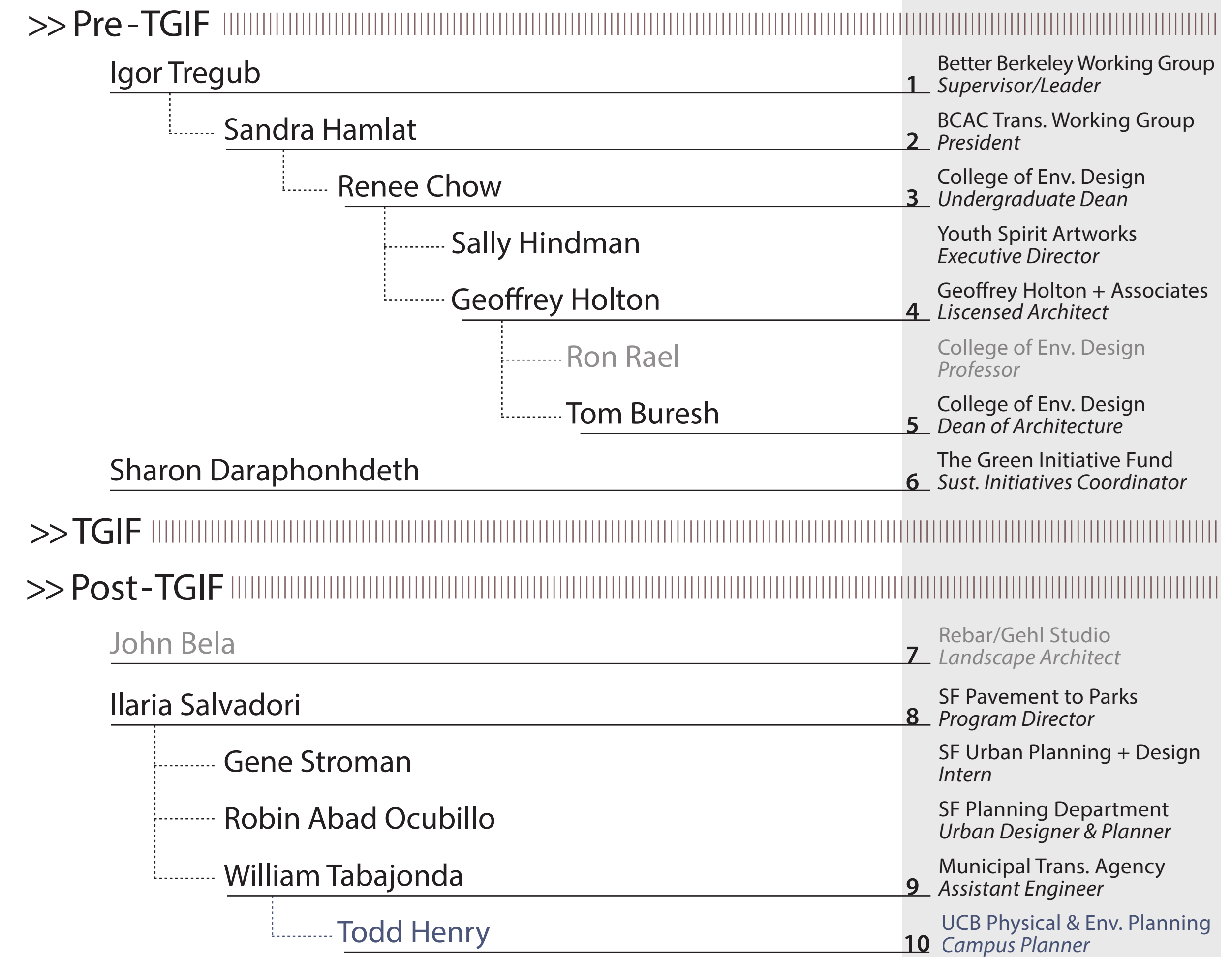


Figure 2
A Parklet & Artlot for the Lorin - CCPF 2015/2016
Neighborhood Context & Project Sites

PEOPLE & CONNECTIONS



APPENDIX

Berkeley Parklets, Bike Corrals, and Art Lots:
A "How-To" Primer for Creating Sustainable Transportation Alternatives



Figure 3
PICTURES OF THE NEIGHBORHOOD // POTENTIAL SITES
A Parklet & Artlot for the Lorin - CCPF 2015/2016
Neighborhood Context & Project Sites